

First Presbyterian Church

Serving Christ in Milledgeville

210 S. Wayne Street, Milledgeville, Georgia 31061

478-452-9394; fpchurch@windstream.net; www.fpcmilledgevilleorg

Like us on Facebook



**Wandering
Heart**
*Rescue me
from danger*
Second Sunday in Lent

Followers of Christ, called to serve our community
and be an actively-engaging light to the world.

We live into our faith, inspired by our worship, encouraged by our fellowship, empowered by our studies. As a Matthew 25 Congregation, we answer the call to provide food and shelter to those in need. As a More Light Presbyterians Congregation, we provide a safe and affirming worshiping community for LGBTQIA+ persons, celebrating the uniqueness and dignity of each person as they seek a home for their faith and confidence in the promises of God for them.

**February 25, 2024
Second Sunday in Lent
Rescue me from danger**

PRELUDE

Ave Verum

W.A. Mozart, arr. Anthea Smith

CHIMING OF THE HOUR

WELCOME AND ANNOUNCEMENTS

We are delighted that you have joined us this Lord's Day. If you'd like to learn more about our mission and ministry, we invite you to speak to Rev. Susan. Thank you for being with us!

GATHERING AROUND GOD'S WORD

CHORAL INTROIT

Be still, my soul: the Lord is on thy side

(GTG #819, vs. 1)

CALL TO WORSHIP

Leader: God welcomes the dreamers and the doubters,

Congregation: the courageous and the fearful,

Leader: the hungry and the hopeful,

Congregation: the impatient and the reserved.

Leader: God welcomes the young and the old,

Congregation: the poets and the prophets,

Leader: the faithful and the tired,

Congregation: the curious and the convicted.

Leader: Wherever you are on your journey, wherever your boat is at sea,

Congregation: there is room for all to gather here.

Leader: This is God's house.

Congregation: Let us worship the one whom even the seas obey.

CHILDREN'S TIME

Gloria Burns

MEDITATIVE READING

Reverend Sarah Speed

I'd rather not need rescue. I'd prefer a five-step plan and a quick-fix solution. I'd prefer stubborn insistence over honest vulnerability, because rescue requires asking for help. Rescue names the rising water. Rescue sees the tired, treading feet. Rescue feels the swell of the wind and the rain at a slant. But when the floor falls out and the world is on fire and my small hands cannot fix the hurt welling in me, the prayer that slips out is *rescue, rescue, rescue me.*

*HYMN 185

Lonely the Boat

CALL TO CONFESSION

In our scripture passage for today, Peter is out on a boat with the disciples when a storm hits. Instead of cowering in fear, Peter spots Jesus on the water and bravely crawls out of the boat to move closer to Christ. The prayer of confession is one way that we do the same; it's one way that we can crawl out of our boats. In the prayer of confession, we are honest about the storms that rage within and around us. In this prayer, we speak with honesty in an effort to move closer to God. This is our moment to crawl out of the boat. So friends, let's be like Peter. Join me in being courageous. Join me in truth-telling. Join me in prayer. It's time to get our feet wet. Let us pray together:

PRAYER OF CONFESSION

Gracious God, There are days that threaten to swallow us, days when the storms of life feel too big. In those moments, we often cling to the sides of our ships in fear, spending more energy hiding from storms than looking for you. Forgive us for doubting ourselves. Forgive us for doubting you. Rescue us from the storms of today and from the fears that trap us. With hope in our hearts we pray, amen.

HEARING GOD'S WORD

CHORAL RESPONSE *Be still, my soul: thy God doth undertake* (GTG #819, vs. 2)

DECLARATION OF FORGIVENESS

Family of faith, You could get out of the boat and walk on water like Peter, or fall to your knees and stay in one place. No matter what you do, Christ's love for you is unchanging. Fearful or brave, faithful or doubting, Christ is always walking toward you. So hear and believe this good news: God's love is stronger than any storms. On our best days, and on our worst days, we are seen, forgiven, and loved. God is always walking toward you. Thanks be to God!
Amen.

GLORIA PATRI

HYMN NO. 581

***Glory be to the Creator, and to the Christ and to the Holy Ghost.
As it was in the beginning, is now and ever shall be, world without end!
Amen, amen***

THE PEACE

ANTHEM

Love the Lord

arr. Mark Schweizer

*Alas! and did my Savior bleed
And did my Sov'reign die?
Would He devote that sacred head
For sinners such as I?
O who is like Jesus?
Christ our Savior,
Praise ye the Lord!
There's none like Jesus,
Christ our Savior,
Love and serve the Lord!*

*Well might the sun in darkness hide
And shut his glories in,
When Christ, the mighty Maker died,
For mortal creature's sin.
O who is like Jesus?
Christ our Savior,
Praise ye the Lord!
There's none like Jesus,
Christ our Savior,
Love and serve the Lord!*

PRAYER FOR ILLUMINATION

Holy God, There are days where the wind is loud. There are days where the rain tears through the trees and the storms of life beg for our attention. So just as you stilled the wind and the sea, still our wandering hearts. Quiet our restless minds. Reach out your hand to us and pull us into your Word so that we might hear, really hear, your message to us today. With one foot out of the boat, we pray, amen.

SCRIPTURE READINGS

		Pew Bible Page #
OLD TESTAMENT	Genesis 17:1-7, 15-16	OT P 13
PSALM	Psalms 22:23-31	OT P 501
NEW TESTAMENT	Romans 4:13-25	NT P 155
GOSPEL	Matthew 14:22-33	NT P 16

SERMON

*HYMN 834

*Courage and Calm in the Storm
Precious Lord, Take My Hand*

Reverend Susan Balfour

MINUTE FOR MISSION
INVITATION TO THE OFFERING



We believe in a God who moves toward us when storms rage; who invites us to be brave; whom the wind and waves obey; who knows our names. We believe in a God of love. We are not afraid. Let us make our offering to God, trusting in God's love for us. You may present your offering at the front of the sanctuary, or if you prefer to contribute electronically, you can do so using the PayPal QR Code in your bulletin or visit our website at fpcmilledgeville.org.



OFFERTORY

God Be in My Head

Henry W. Davies, arr. Noel Rawsthorne

*DOXOLOGY

***Praise God from whom all blessings flow;
Praise God all creatures here below;
Praise God above, ye heavenly host;
Creator, Christ, and Holy Ghost.
Amen.***

*PRAYER OF THANKSGIVING AND DEDICATION

Blessed are you, O God, maker of all things. Through your goodness you have blessed us with these gifts: our selves, our time and our possessions. Use us, and what we have gathered, in feeding the world with your love; through the one who gave himself for us, Jesus Christ our Savior and Lord. Amen.

PRAYERS OF THE PEOPLE AND THE LORD'S PRAYER

BEARING GOD'S WORD INTO THE WORLD

*HYMN 8

Eternal Father, Strong to Save

*CHARGE AND BENEDICTION

Go in Peace. AMEN!

CHORAL BENEDICTION

Be still, my soul: the hour is hastening

(GTG #819, vs. 3)

*POSTLUDE

Bourrée from 'Water Music'

G. F. Handel, arr. Noel Rawsthorne

Prayer by Rev. Sarah A. Speed | A Sanctified Art LLC | sanctifiedart.org

Wandering Heart

Figuring out faith with Peter

Lenten Midweek Prayer Service

Wednesdays at 12:15 PM



Lord, hear our prayers

CHURCH FAMILY:

Wesley Applebury, attending seminary in Atlanta
Beth Baarda, ongoing health concerns, at home in hospice care in LaGrange, GA
Nan Carpenter, ongoing health concerns
Lee Gillis, recovering from surgery
Mandie Respass, recovering from car accident

LIMITED MOBILITY

Helen Danuser

EXTENDED FAMILY:

Nannette Green Allen, childhood friend of Margaret Ivester with serious health issues
Etta Bentley, Jennifer Flory's father's wife, ongoing health concerns
Judy Bledsoe, Mary Lucik's daughter, recovering from car accident
Michael Bledsoe, Mary Lucik's grandson, multiple health concerns
Heather Brooks, Susan Balfour's cousin, lung and brain cancer
Margret Ellen (Meg) Clark, Margaret Ivester's daughter, ongoing health concerns
Susan Eilers, Mary Lucik's friend, cancer surgery
Don Goggans, Elaine Goggans' son, stage four cancer
Dee Hartmann, Susan Balfour's aunt, health issues
Alonzo Kelly, Craig Callender's father, Stage 4 Melenoma
Elizabeth Knobel, Carolyn Morgan's daughter, cancer stable
PJ Malagisi, former elementary student of Jennifer Flory, traumatic brain injury
Julie Montemayor, Becky Henderson's mother, ongoing health concerns
Mildred Moore, Sunda Coleman's aunt, in hospice care
Ben Morgan, Jenifer Flory's brother, ongoing health concerns
Janie Mullis, Bill Wert's son-in-law's mother, ongoing health concerns
Joanne Murphy, Kathy Carroll's mother, ongoing health issues- at Carlyle House in Macon
Paul Orman, Barbra Orman's husband, ongoing health concerns
Chris Pearson, Sunda Coleman's son, recovering at home; dialysis
Runette Pounds, Sunda Coleman's mother, ongoing health concerns, recovering from a fall
Gloria Roberts, Bill Werts' cousin, recovering from a traumatic fall
Willy Sanders, Sunda Coleman's cousin, ongoing health concerns
Bob Smart, Anne Smart's husband, ankylosing spondylitis
Windy Spaide, Craig Callender's sister, in rehab
Randy Stewart, Haywood Edwards son-in-law, ongoing health concerns
Addie VanOrsdale, family friend of Cissy Lane, kidney failure
Dudley Weathers, Anne Weathers' husband, ongoing health concerns
Johnny Wynne, friend of Sue Bennett's, bone marrow transplant

IN ASSISTED LIVING

George and Nan Carpenter, PO Box 527, Jefferson, GA 30549
Jude Hirsch, Fellowship Home at Meriwether, 10 Meriwether Place
Nancy Holbrook, The Dublin Place, 504 Fire Tower Rd, Dublin GA 31021
Eloise Lamb, Fellowship Home at Meriwether, 10 Meriwether Place, Milledgeville, GA 31061
Maryanne Morris, Fellowship Home at Meriwether, 10 Meriwether Place
Jackie Northington, Fellowship Home at Meriwether, 10 Meriwether Place, Ste 3303
Suzy Smith, Savannah Court 1061 Willow Run Rd., Unit 4, Greensboro GA 30642

**Our deepest condolences to the Baarda family on the death of our sister Elizabeth.
Cards can be sent to: 118 Gabbettville Circle, LaGrange, GA 30240**

THIS WEEK AT OUR CHURCH: February 25- March 3

Today	9:30 Sunday School 10:15 Children's Sunday School 10:15 Crochet Sunday School 11:00 Worship 12:00 Youth Group 12:00 Milly Free Fridge Service Opportunity
Monday	6:30 PFLAG open Meeting 7:00 MSG
Tuesday	9:30 Food Pantry 12:00 Kiwanis
Wednesday	12:15 Midweek Prayer Service 6:30 Potluck and Bible Study
Sunday	9:30 Sunday School 10:15 Children's Sunday School 10:15 Crochet Sunday School 11:00 Worship with Communion 12:00 Youth Group

Offerings in February	\$10,912.00
Anticipated February expenses:	\$19,736.00

(Monthly expenditures may exceed anticipated amounts)



Join us for worship in-person, online at Facebook Live or on the radio at 102.3 WKZR radio every week.

Sunday: 9:30AM **Zoom Sunday School Class**, we are studying *The Collected Sermons of Walter Brueggemann*
www.Zoom.com, Meeting ID: 871 5078 2729
Passcode: 881336

Fellowship Sunday School Class, studying *Contrarians Guide to Knowing God: Spirituality for the Rest of Us* by Larry Osborne;
Meeting in the Parlor Room

10:15AM **Children's Sunday School Class**, Wandering Heart curriculum by Sanctified Art, singing, crafts and stories, meeting in the Fellowship Hall

Crochet Sunday School Class, learn to crochet while exploring your faith. A unique take on Sunday School, Meeting in the library

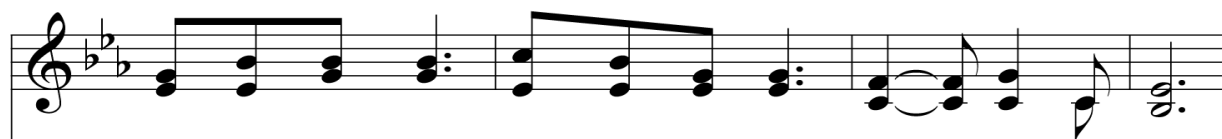
Wednesday: 6:30PM **Wednesday Night Potluck and Bible Study**, *The Other Evangelicals, A Story of Liberal, Black Progressive, Feminist and Gay Christians and the Movement That Pushed Them Out*, Meeting in the Fellowship Hall

Lonely the Boat

깜깜한 밤



1 Lone - ly the boat, sail - ing at sea, tossed on a cold, storm - y night;
 2 Strong winds a - rose in all their rage, toss - ing the ti - ny lone boat;
 3 Trem - bling with fear, deep in de - spair, look - ing for help all a - round,
 4 "Plead - ing for your mer - cy, O Lord, e - ven a sin - ner like me;
 5 "Storms in our lives, cru - el and cold, sure - ly will a - rise a - gain,



cru - el the sea which seemed so wide, with waves so high.
 waves bil - lowing high, toss - ing the boat, lost and a - float.
 the sail - or saw light from a - bove. "Help can be found;
 com - mand, O Lord, calm to the sea, as in Gal - i - lee!
 threat - en - ing lives, threat - en - ing us on life's wild sea.



This sin - gle ship sailed the deep sea, straight in - to the gale;
 The sail - or stood all a - lone, won - dering what to do;
 my God is here in my small boat, stand - ing by my side;
 Please save my life from all dan - ger, grant a peace - ful life;
 Power - ful and great, God's hand is there, firm - ly in con - trol.



This Korean hymn effectively uses the story of Jesus' calming of the storm (Matthew 8:23–27/Mark 4:35–41/Luke 8:22–25) as a parallel for the strength and comfort available to individuals on "life's wild sea." The universal immediacy of this image transcends cultural barriers.

O Lord, great is the per - il; dan - gers do all as - sail.
 O Lord, so help - less was he, won - der - ing what to do.
 O I trust in the Sav - ior; now in my life a - bide.
 O please be mer - ci - ful, Lord, in times of calm and strife.
 O Lord, calm peace comes from you, peace comes to my lone soul."

KOREAN

- 1 캄캄한 밤 사-나운 바-람 불--때
만경창과 망-망한 바-다에
외로운배 한-척이 떠-나가니
아- 위태하구나 위-태하구나
- 2 비바람이 무-섭게 몰-아치--고
그 놀란물 큰- 파도 일-때에
저뱃사공 어-쩔줄 몰-라하니
아- 가련하구나 가-련하구나
- 3 절망중에 그- 사공 떨-면서--도
한 줄기의 밝-은빛 보-고서
배안에도 하-나님 계-심믿고
오- 기도올린다 기-도올린다
- 4 아버지여 이- 죄인 굶-어보--사
성난풍랑 잔-잔케 하-시고
이불쌍한 인-생을 살-리소서
오- 우리 하나님 우-리 하나님
- 5 모진바람 또- 험한 큰- 물결--이
제아무리 성-내어 덮-쳐도
권능의 손 그- 노를 저-으시니
오- 맑은 바다라 맑-은 바다라

834 Precious Lord, Take My Hand

1 Pre - cious Lord, take my hand; lead me on, help me
 2 When my way grows drear, pre - cious Lord, lin - ger

stand; I am tired, I am weak, I am worn.
 near; when my life is al - most gone,

Through the storm, through the night, lead me on to the
 hear my cry, hear my call, hold my hand lest I

light; take my hand, pre - cious Lord, lead me home.
 fall; take my hand, pre - cious Lord, lead me home.

This black gospel song, like much hymnody, sprang out of the author's deep personal loss (the death of his wife and newborn son), yet it has brought solace to many. He thought his fingers were playing new music, but they unlocked a deep memory of a tune almost a century old.

8 Eternal Father, Strong to Save

1 E - ter - nal Fa - ther, strong to save, whose arm has bound the
 2 O Sav - ior, whose al - might - y word the winds and waves sub -
 3 O Ho - ly Spir - it, who did brood up - on the cha - os
 4 O Trin - i - ty of love and power, all trav - elers guard in

rest - less wave, who bade the might - y o - cean deep its
 mis - sive heard, who walked up - on the foam - ing deep, and
 wild and rude, and bade its an - gry tu - mult cease, and
 dan - ger's hour; from rock and tem - pest, fire and foe, pro -

own ap - point - ed lim - its keep: O hear us when we
 calm a - mid its rage did sleep: O hear us when we
 gave, for fierce con - fu - sion, peace: O hear us when we
 tect them where - so - e'er they go; thus ev - er - more shall

cry to thee for those in per - il on the sea.
 cry to thee for those in per - il on the sea.
 cry to thee for those in per - il on the sea.
 rise to thee glad praise from air and land and sea.

The year after this text was written for a student sailing to America, it was included in the most influential British hymnal of the 19th century. The tune especially composed for it preserves the ancient Roman name of the island where Paul was shipwrecked, now called Malta.