

# CHURCH CURRENTS

## DECEMBER 2022

210 S. Wayne Street, Milledgeville, Georgia 31061

478-452-9394; fpchurch@windstream.net; www.fpcmilledgeville.org



**MORE LIGHT**  
PRESBYTERIANS

Join us on Sunday mornings on WKZR  
102.3 FM or via Facebook Live

**FIRST PRESBYTERIAN CHURCH**  
**210 SOUTH WAYNE STREET**  
**MILLEDGEVILLE, GA 31061**





# First Presbyterian Church

## Issue No. 317 December 2022

Pastor:  
Rev. Susan Balfour

Coord. of Children &  
Youth Ministries:  
Gloria Burns

Admin. Asst.:  
Lois Callender

Director of Music:  
Dr. Jennifer Flory

Organist:  
Kate Phillips

Child Care Providers:  
Childcare is  
temporarily  
unavailable

Hello Friends,

Warmest of Christmas greetings from your Session and wishing all of you a Happy New Year.

This year has continued to be challenging for us all, and as always when we have needed your assistance you have stepped up. We appreciate you all so much.

We have been meeting every month, whether in person here in the Church or on Zoom a few times. We have a few ongoing Property issues, but we have been able to resolve most. You might notice soon some repair work on the steeple. A portion of the metal flashing fell off and we are having it reattached and sealed, there will be a people crane in the yard as this is needed to reach the height. We are working on the 2023 budget, which will be presented to you in the new year. Thank you to those who have submitted your pledge cards so far, we accept them at any time. With God's grace we continue to move forward in our plans of work for the coming year.

Continue to support our Food Pantry, Samaritan's ministry and Milly Free Fridge. All three of these outreaches are very important in our community and allows us to affirm our Matthew 25 commitment.

Recently, about ten folks came and helped us with Greening of the church for the Advent Season. It is beautiful and if you haven't been in the sanctuary, please come and worship with us during this time.

If you ever have questions or concerns, please contact me or the church office. We may not have an answer for you, but we will try to do our best to resolve the issues.

Please continue to pray for each other and lift up those that you know with a call or card from you. This means so much to our shut-ins.

Many Blessing to all our church family,

~Nancy Miller



The Max Noah Singers are back and will be once more gracing the First Presbyterian sanctuary. Join us on Thursday, December 15 at 7:30PM to hear a Christmas concert like no other.

## **Food Pantry**

November has been a busy month! As of this writing, **we have served 64 families (10 new)** in November. As noted in October's article, I have begun preparing 15 bags each week because we have run out twice recently. Last week we ran out and then cleared the shelves of "odds and ends", too! Thank you for continuing to add items on first Sundays (and in between) and for contribution of designated funds. We can use it all, as you can see.

Please keep in mind my request for 2023 calendars. We will begin to distribute those next week and they are quite popular items.

Also remember that we want to give each family a cash Christmas gift in December if we can. You may prepare a card signed "Your friends at First Presbyterian Church", enclosing \$25 in cash, or make a check to the church with "Food Pantry Christmas gift" on the memo line and we will prepare a card. Drop your donation into the offering plate or bring it to the office and we will do the rest.

As always, your contributions to this ministry are greatly appreciated by the folks who come for help. This is not a line item in the budget, so what you do "above and beyond" is what keeps it going. Thank you, too, to the several folks who have contributed their time and energy recently. I appreciate all of you ~ you are a blessing to me and to all you touch!

~Donna Gautier

### **Food Pantry staples list:**

Canned soups, canned ravioli, canned ham, tuna, salmon, and chicken; boxed mac & cheese, pasta noodles, grits, oatmeal, and/or cereal; peanut butter & jelly; canned spaghetti sauce, fruit, and vegetables







# CONGREGATIONAL FELLOWSHIP



## FPC Chili Cook Off is back!

Are you ready to test your chili recipe against the rest of the congregation? Think you have what it takes to win? Or do you just enjoy making and eating chili? Then join us on **December 11**, **directly after the Joy Gift Program** for our annual Chili Cook Off.



## FPC BOOK CLUB



The December meeting for FPC Book Club will be held on the second Thursday, December the 8th. In what has become a tradition, **Dick and Arlene Mueller have invited the group to their home for tea and light refreshments to enjoy**, as we discuss our book selection for the month.

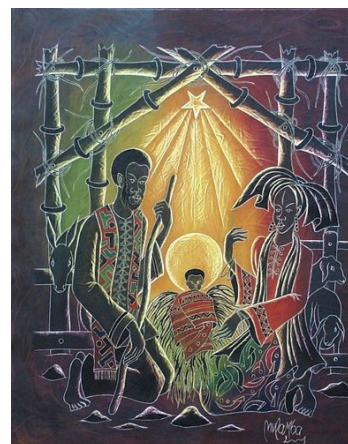
Our book selection for December is *Nomad Century* by Gaia Vince. Most people accept climate change, but many are unaware of how destructive it has become. Drought hit regions that can no longer support the people, coastlines diminishing year after year, wildfires and hurricanes leaving widening paths of destruction, but the biggest consequence is a total reshaping of the earth's human geography. Global migration has doubled in the past decade with an estimated billions of displaced people in the coming decades.

Book selections for January and February have not been made, so please bring your suggestions to the meeting. The December meeting is always fun with good food and fellowship, and sometimes we actually get around to discussing the book. See you there. It will be an enjoyable afternoon. ~Millie Murphy

## PRESBYTERIAN WOMEN

The Presbyterian Women's Bible Study continues to meet on the second Sunday at 4:00 pm and the second Tuesday at 11:00 am. Please note the change in time for the Sunday group has moved to 4:00 pm. Both groups meet in the Parlor Room.

This year's book, *Celebrating Sabbath* by Carol Bechtel has proven interesting from the very start.





# MISSION AND MINISTRY



Thanks to your generosity of time and money, we continue to make sandwiches for the Milly Free Fridge each month. Join us Sunday, December 18th to help feed our neighbors and ourselves.



Please bring any of the following:  
Sliced bread, lunch meat, jelly, fresh fruit, prepackaged snacks, bottled drinks. We will provide condiments and labeling materials. Please note: We currently do not need peanut butter or bread. Please consider bringing something else. Thank you!



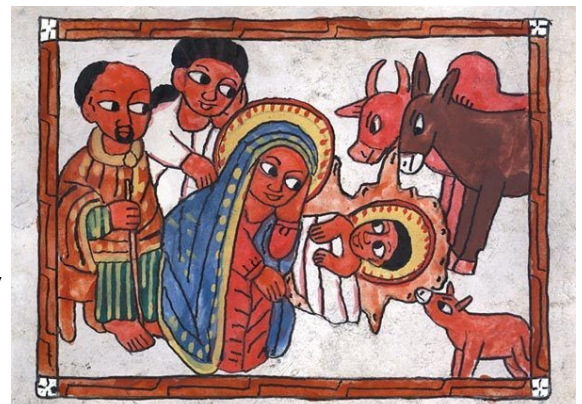
## Angel Tree 2022



This year, we're doing the Angel Tree a little differently. We are asking you to donate to the Samaritan Ministry, Food Pantry or Pastor's Discretionary Fund. Hang an angel for each time you donate. Unwrapped toys will also be collected. Just leave them beneath the tree.

### Samaritan Ministry

Unfortunately, due to a lack of funds, we were only able to help one person in the month of November. There remains a great deal of need in this area that not many other charities can fill. Please consider giving regularly to this mission as we often have many people who are in need each month. We will not be giving assistance in December because of the Angel Tree. Thank you for your support of this vital ministry and please consider giving of your time once a month for this mission.





# December

## THE PERFECT GIFT.

Through the Christmas Joy Offering,  
we come together to support past, present and future leaders,  
embodying God's perfect gift to us, Jesus Christ.  
When we all do a little, it adds up to a lot.



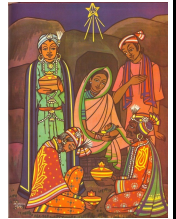
CHRISTMAS JOY  
SPECIAL OFFERINGS  
LEADERSHIP, PAST, PRESENT, AND FUTURE

4 9:30 Sunday School  
10:00 Puppets  
11:00 Worship Service on  
FBLive & WKZR102.3FM  
2:00 S.T.A.R.S  
3:00 Youth Choir/Group

5

6

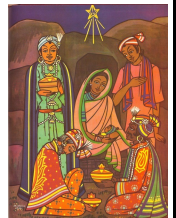
9:30-10:30  
Food Pantry  
12:00 Kiwanis  
Luncheon



11 9:30 Sunday School  
10:00 Puppets  
11:00 Worship Service  
4:00 PW Bible Study  
6:00 JOY GIFT PROGRAM  
6:30 Chili Cook Off

12

13 9:30-10:30  
Food Pantry  
11:00 PW  
Bible Study  
12:00 Kiwanis  
Luncheon



18 9:30 Sunday School  
10:00 Puppets  
11:00 Worship Service  
12:00 Milly Free Fridge

19

20  
9:30-10:30 Food  
Pantry  
12:00 Kiwanis  
Luncheon



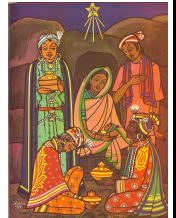
25 **MERRY CHRISTMAS!**  
11:00 Informal  
Worship  
Service in  
Fellowship  
Hall



26

27

9:30-10:30  
Food Pantry  
12:00 Kiwanis  
Luncheon





# 2022



	1	2	3
7 5:00PM Youth Group 6:30PM Wednesday Bible Study 	8 2:00PM FPC Book Club 	9	10 10:00 Work Day 
14 6:30PM Wednesday Bible Study 	15 7:30PM Max Noah Homecoming Performance 	16	17
21 6:30PM Wednesday Bible Study 	22	23	24 Christmas Eve Service 5:30PM 
28 6:30PM Wednesday Bible Study 	29	30	31 

## Elders on Session

Class of 2024 ~ Jennifer Flory (Worship) Nancy Miller (Clerk of Session) Laurie Peebles (Personnel) Anne Smart (Christian Education) Bill Werts (Missions and Outreach)

Operations: The church office is now open Monday - Friday, 9:00 a.m. - 1:00 p.m.

Pastor Office Hours: Tuesday - Friday 10:00 a.m. - 1:00 p.m. Please call the office for an appointment.



# YOUTH MINISTRY



As we approach our Joy Gift Program, choir rehearsals will expand to 2:45 – 3:45. Please let us know if you are planning to participate with the group for this event. You must practice with us to perform on **December 11**.

We continue to meet those Youth who can on Wednesday from 5:00-6:30 so that we can complete the Rock Garden that Ms. Marion and Buddy are helping us with.

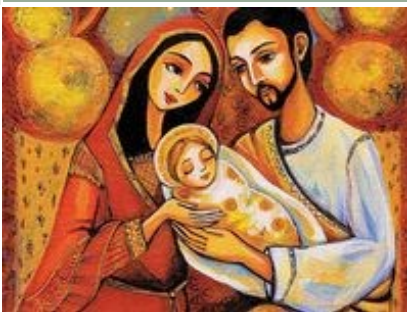
**Our schedule is:**

**Puppets (1-12) Sunday 10am to perform at 11 am worship**

**S.T.A.R.S.(K-5<sup>th</sup>) Sunday 2:00-3:00**

**Youth Choir (K-12<sup>th</sup>) Sunday 3:00 – 3:30**

**Sunday Youth Group (6<sup>th</sup> -12<sup>th</sup>) including prep for Montreat ( 9<sup>th</sup> - 12<sup>th</sup>) Sunday 3:30 – 4:30**



## **TREASURER'S CORNER**

Frankly my report last month was an urgent plea for greater financial support. Many of you took the information well and responded. Please review the summary attached. This kind of giving must continue. Our church depends on our sacrificial giving. God's work is hard, but we can continue to make a difference in the lives of others.. ~Joel Burns

	September	October	2022 YTD
Contributions	\$12,641	\$19,026	\$130,245
Other Income	\$684	\$684	\$9,482
Total Income	\$13,325	\$19,710	\$139,727
Budgeted Expenses	\$22,982	\$15,424	\$181,281
Net (Loss)	(\$9,657)	\$4,286	(\$41,554)





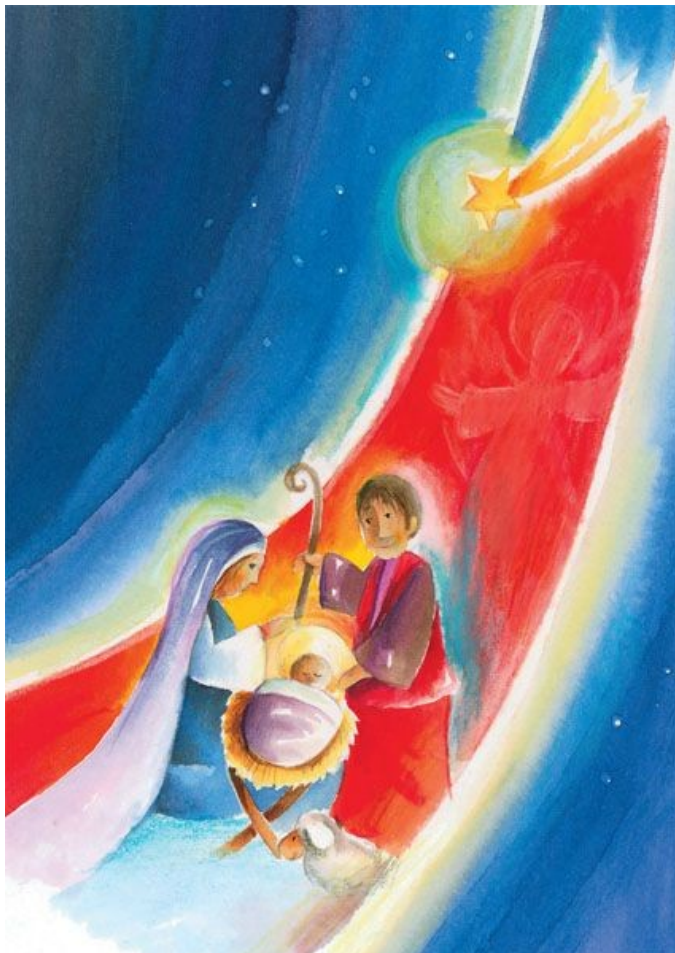
# CHRISTIAN EDUCATION



## WEDNESDAY NIGHT BIBLE STUDY

The Wednesday night study group meets for a pot luck supper and lively discussion. We have started the book, *Bullies and Saints* by John Dickson. This book is a fascinating review of the history of the good and evil Christianity has caused. The pot luck begins at 6:30 P.M. If you do not wish to participate in the pot luck, the discussions begin about 7:00 P.M. Please join us whether you have the book or not! The book is available on Amazon.

~Joel Burns



## FELLOWSHIP SUNDAY SCHOOL



We are studying *A Call to Die* by David Nasser. It is a series of 40 lessons about

how we draw closer to the teachings of Jesus. This group meets in person in the parlor room every Sunday morning at 9:45 AM. We would love to have you join us. ~Bill Werts

## ADULT SUNDAY SCHOOL

The Bible Sunday School class continues to meet via ZOOM. This permits us to study and learn without risk of COVID exposure in an informal manner from the comfort of our homes or on our smartphones. Every Sunday at 9:30 AM we meet for our conversations and study. We are studying *The Collected Sermons of Walter Brueggemann*. His fascinating Biblical interpretation and his humor lace this collection and make for easy discussions. I hope a number of you will join us. If you wish to join by ZOOM, call me at (478) 414-6516 and I will forward the link. ~Joel D. Burns



# CHRISTMAS JOY OFFERING



CHRISTMAS JOY  
SPECIAL OFFERINGS

CHURCH LEADERS—PAST, PRESENT, AND FUTURE

Offering collected  
November 27-  
December 18, 2022

## Joy Gift Program

11TH DECEMBER //  
6PM



*Oh Holy Night*



*First Presbyterian Church*  
OF MILLEGEVILLE, GEORGIA

210 South Wayne St,  
Milledgeville, GA 31061

The Christmas Joy Offering provides assistance to current and retired church workers and their families in their time of need, and develops our future leaders at Presbyterian-related schools and colleges equipping communities of color. Our younger saints perform a program that is a Gift of Joy for the church. The Joy Offering is also collected during the program.



"We teach that faith is to be lived out in the world. Because so many young people today see the church as building walls to isolate and separate, we at Menaul are all about opening doors to the richness of God's creation."

John Sitrer  
Upper School teacher, Menaul School  
Albuquerque, New Mexico



CHRISTMAS JOY  
SPECIAL OFFERINGS  
LEADERSHIP: PAST, PRESENT, AND FUTURE





# 25 DAYS OF Messages

## 1 DECORATE A TREE

Buy/decorate a Christmas tree for a needy family or nursing home

Creative way to stage: a Charlie Brown type Christmas tree with few ornaments and garland

## 2 BAKE COOKIES

Give them to your local fire department

Creative way to stage: a toy fire truck, angel driving it with cookie sheet, etc

## 3 BRIGHTEN THEIR DAY

Leave random cards of encouragement around your home town.

Creative way to stage: note cards around snow village

## 4 SNACKS FOR McD

Take snacks to the Ronald McDonald House residents

Creative way to stage: McDonald's logo off of any McDonald's item with a few snacks and things to put them in

## 5 GIFT CARD A CAR

Buy some gift cards and leave them on random cars in parking lots

Creative way to stage: message on car with angel and gift card under windshield wiper

## 6 SHOW A BABY LOVE

Make a Baby Care Kit [churchworldservice.org](http://churchworldservice.org)

Creative way to stage: diapers, baby doll, etc

## 7 GIVE NEIGHBORS CANDY CANES

Creative way to stage: candy canes everywhere, hanging on chandelier etc

## 8 GO CAROLING

Go to nursing home or around neighborhood

Creative way to stage: carolers and music

## 9 CLEAN FOR SOMEONE

Clean siblings room, help someone at school with a mess

Creative way to stage: glitter in dust pan with broom, other cleaning supplies

## 10 BUILD A BED

Gather loose change around the house for [sweetsleep.org](http://sweetsleep.org)

Creative way to stage: toy bed and pictures of sweet sleep organization plus a box from them with change around it

## 11 THANK YOUR TEACHER

Have your child say a special thanks to their teacher today

Creative way to stage: angel with apple and chalkboard with books

## 12 TAKE A MEAL

Take a meal to a new family, a widow, a single mom, a friend or let your child choose someone

Creative way to stage: angel with a cookbook

## 13 ANGEL TREE

Find angel tree at nearest Chick-fil-a and pick an angel to buy a gift for

Creative way to stage: Angel with wrapped chick-fil-a cow

## 14 BACKPACK FOR HOMELESS

Creative way to stage: Angel poking out of backpack

## 15 SHARE SOME TOYS

Give toys to thrift store or family in need

Creative way to stage: angel in the midst of several toys in a box

## 16 LETTER TO TROOPS

Creative way to stage: Angel with Army men, American flag with note cards

## 17 SMILE

Child can give a sticker to everyone he/she smiles to.

Creative way to stage: angel with smiley face stickers

## 18 GIVE A STUFFED ANIMAL

Take a stuffed animal to the police or fire station for children in accidents, en route to hospital or other

Creative way to stage: angel with some stuffed animals next to police cars

## 19 FEED THE HUNGRY

Donate to canned foods to shelter or for \$1, help feed a child for a week [onlyabreath.com/hearts-against-hunger](http://onlyabreath.com/hearts-against-hunger)

Creative way to stage: angel with canned foods

## 20 SPEND TIME WITH \_\_\_\_\_

Spend time with a family member or someone in need

Creative way to stage: angel with a clock

## 21 SAY THANKS

Say thanks to everyone they come in contact with that day. Teacher, policeman, grocery store worker, troops, etc.

Creative way to stage: angel with a thank you card

## 22 GIVE HUGS

Give people you love hugs all day long.

Creative way to stage: angel hugging another stuffed animal or doll, hearts from construction paper around message

## 23 MONEY IN A BUCKET

Give money to the salvation army bell ringer

Creative way to stage: Angel with change around her and a bell

## 24 SOLES 4 SOULS

Donate shoes to [Soles4Souls.org](http://Soles4Souls.org)

Creative way to stage: Angel with her feet in a pair of shoes

## 25 HAPPY BIRTHDAY JESUS

Bake a birthday cake for Jesus celebrating Christmas Day.

Creative way to stage: Angel with manger scene and baking supplies, candles, etc

BE SURE TO SHARE YOUR STORIES AT [YOURCHRISTMASANGEL.COM](http://YOURCHRISTMASANGEL.COM)!



## Prayer Requests



### **Church Family:**

Beth Baarda, rehabilitating at a family home  
Harry Beck, ongoing medical concerns  
Nan Carpenter, recovering from fall at home  
Helen Danuser, recovering from a fall  
Jenny Moore, recovering at home  
Jackie Northington, recovering at home  
John Sallstrom, ongoing health concerns  
Clyde Tipton, recovering at home from a stroke

### **Limited Mobility**

Martha Chappell  
Helen Danuser

### **Extended Family:**

Michael Bledsoe, Mary Lucik's grandson, multiple health concerns  
Brittany Caruthers, Sunda Coleman's niece, chemo treatment  
Susan Eilers, Mary Lucik's friend, cancer surgery  
Dee Hartmann, Sandra Balfour's sister-in-law, health issues  
Alonzo Kelley, Craig Callender's father, Stage 4 Melanoma  
Elizabeth Knobel, Carolyn Morgan's daughter, cancer stable  
Julie Monteaugustor, Becky Henderson's mother, ongoing health concerns  
Chris Pearson, Sunda Coleman's son, recovering at home; dialysis  
Runette Pounds, Sunda Coleman's mother, ongoing health concerns  
Willy Sanders, Sunda Coleman's cousin, ongoing health concerns  
Bob Smart, Anne Smart's husband, ankylosing spondylitis  
Windy Spaide, Craig Callender's sister, ongoing health concerns  
Randy Stewart, Haywood Edwards son-in-law, ongoing health concerns

### **Military Service**

Will Deason  
Rebecca Elangwe

### **In Assisted Living:**

Bryan Dempster, Green Acres, 313 Allen Memorial Drive, Milledgeville 31061  
Nancy Holbrook, The Dublin Place, 504 Fire Tower Rd, Dublin GA 31021  
Eloise Lamb, Fellowship Home at Meriwether, 10 Meriwether Place  
Maryann Morris, Fellowship Home at Meriwether, 10 Meriwether Place  
Gloria Smith, Fellowship Home at Meriwether, 10 Meriwether Place, Ste 1110  
Suzy Smith, Savannah Court, 1061 Willow Run Rd, Unit 4, Greensboro GA 30642



### ***Anniversaries***

December 4~ Carl & Nancy Miller  
December 11~ Joseph &  
Catherine Dean  
December 20~ Anne & Bob Smart  
December 21~ Jude Hirsch & Lee  
Gillis

### ***Birthdays***

December 3~ Cissy Lane  
December 3~ Susan McGill  
December 10~ Ben Smart  
December 12~ Emily Bradley  
December 13~ Karen Grimes  
December 13~ Cecilia Odihe  
December 14~ Kathy Carroll  
December 19~ Monica Garcia  
December 20~ Janet Hoffman