

# CHURCH CURRENTS

## JANUARY 2022

210 S. Wayne Street, Milledgeville, Georgia 31061  
478-452-9394; fpchurch@windstream.net; www.fpchurch.org



Join us on Sunday mornings on WKZR  
102.3 FM or via Facebook Live

**FIRST PRESBYTERIAN CHURCH**  
**210 SOUTH WAYNE STREET**  
**MILLEDGEVILLE, GA 31061**



# First Presbyterian Church

Issue No. 306 January 2022

Pastor:  
Rev. Susan Balfour

Coord. of Children &  
Youth Ministries:  
Gloria Burns

Admin. Asst.:  
Lois Callender

Director of Music:  
Dr. Jennifer Flory

Organists:  
Kate Phillips  
Jenny Moore

Child Care Providers:  
Childcare is  
temporarily  
unavailable

## Session Highlights for January 2022

Greetings all,

Although we have not been able to meet recently, I want to reassure you that we are a dedicated group of Session members who are working to meet the needs of our church family as we go through this Advent season and beyond.

Rev. Susan had asked Jennifer to work on our Christmas Eve service, and she met with those who could attend an after church meeting and this task was completed and Session is/was grateful for her talent. We hope you enjoyed our candle light Christmas Eve service. It was a blessing to me to see so many in attendance that evening and everyone had their masks on. Thank you all for your continued support and love.

We have secured additional pulpit supply pastors to help us as Susan continues to care for her mother, who has decided to come home with hospice care. Please continue to keep both of them in your prayers.

As always, if you have concerns or need pastoral support, please call anyone of your Elders or contact the office. We will support and help you through any issues.

Let us all strive for more love, peace and hope in the New Year. -Nancy Miller



## Take the 21 day Racial Justice Challenge:

**Day 1.** Read the PC(USA) churchwide anti-racism policy, “Facing Racism A Vision of the Intercultural Community,” at [facingracism.org](http://facingracism.org).

**Day 2.** Study the Week One lesson from the [Facing Racism Study Guide](#).

**Day 3.** [Watch](#) an updated version of the Clark doll experiment, which explores how early-in-life ideas of racial inferiority and superiority are internalized.

**Day 4.** Study the Week Two lesson from the [Facing Racism Study Guide](#).

**Day 5.** [Read the resolution](#) of the 223rd General Assembly of the PC(USA) on environmental racism.

**Day 6.** [Watch](#) the Presbyterian Hunger Program’s webinar, “Impact of Environmental Injustice on Low Income and Communities of Color.”

**Day 7.** [Read](#) what youth at the 2016 Triennium learned about environmental racism.

**Day 8.** Study the Week Three lesson from the [Facing Racism Study Guide](#).

**Day 9.** Choose a resource on the Doctrine of Discovery to read from [facingracism.org](http://facingracism.org).

**Day 10.** [Watch](#) the PBS documentary “Unspoken: America’s Native American Boarding Schools.”

**Day 11.** [Take the awareness test](#). Go out and change what you notice.

**Day 12.** Study the Week Four lesson from the [Facing Racism Study Guide](#).

**Day 13.** [Read the Confession of Belhar](#). Reflect on how your church is using and living into it.

**Day 14.** [Visit the Presbyterian Intercultural Network’s website](#). Connect with a chapter near you or inquire about creating one.

**Day 15.** Study the Week Five lesson from the [Facing Racism Study Guide](#).

**Day 16.** [Watch the TED Talk](#) “How to overcome our biases? Walk boldly toward them” by Verna Myers.

**Day 17.** [Read “White Privilege: Unpacking the Invisible Knapsack”](#) by Peggy McIntosh.

**Day 18.** Study the Week Six lesson from the [Facing Racism Study Guide](#).

**Day 19.** Notice the structures and practices in your church. Raise questions about how they help or hinder racial equity.

**Day 20.** Engage: Suggest studying the [Facing Racism Study Guide](#) as a church or mid council to your leaders.

**Day 21.** Act: Commit to doing the challenge again. Invite someone to join you.



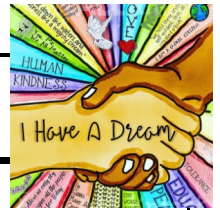


# January



|   |   |  |
|---|---|--|
| <p>2</p> <p>9:30 Sunday School<br/>11:00 Worship Service on<br/>FBLive&amp;WKZR102.3FM</p>  | <p>3</p>  | <p>4</p> <p>9:30-10:30 Food Pantry</p> <div style="text-align: right;">  </div>   |
| <p><b>9 Baptism of the Lord</b></p> <p>9:30 Sunday School<br/>11:00 Worship Service on<br/>FBLive&amp;WKZR102.3FM<br/>3:00 S.T.A.R.S. Party!</p>  | <p>10</p>   | <p>11</p> <p>9:30-10:30 Food Pantry<br/><b>and</b> Samaritan's<br/>Ministry</p> <div style="text-align: right;">  </div> |
| <p>16 9:30 Sunday School<br/>11:00 Worship Service on<br/>FBLive&amp;WKZR102.3FM<br/>3:00 S.T.A.R.S.</p> <div style="text-align: center;">  </div> | <p>17</p> <div style="text-align: center;">  </div> | <p>18</p> <p>9:30-10:30<br/>Food Pantry</p> <div style="text-align: right;">  </div>                                    |
| <p>23</p> <p>9:30 Sunday School<br/>11:00 Worship Service on<br/>FBLive&amp;WKZR102.3FM<br/>3:00 S.T.A.R.S.</p>   | <p>24</p>   | <p>25</p> <p>9:30-10:30 Food Pantry</p> <div style="text-align: right;">  </div>  |
| <p>30</p> <p>9:30 Sunday School<br/>11:00 Worship Service on<br/>FBLive&amp;WKZR102.3FM<br/>3:00 S.T.A.R.S.</p>   | <p>31</p>   |  |

2022



1

NEW YEAR'S DAY

#127046046

|  |   |           |   |
|--|---|-----------|---|
| <p>5 Wednesday<br/>in person Bible<br/>Study 6:30PM</p>     | <p>6</p>                             | <p>7</p>  | <p>8</p> <p>10:00AM<br/>De-greening of the<br/>church</p>  |
| <p>12 Wednesday<br/>in person Bible<br/>Study 6:30PM</p>   | <p>13</p> <p>2PM FPC Book Club</p>  | <p>14</p> | <p>15</p>   |
| <p>19 Wednesday<br/>in person Bible<br/>Study 6:30PM</p>  | <p>20</p>   | <p>21</p> | <p>22</p>   |
| <p>26 Wednesday<br/>in person Bible<br/>Study 6:30PM</p>  | <p>27</p>   | <p>28</p> | <p>29</p>   |

Elders on Session

Class of 2021 ~ Grace Anne Azahar (Finance) Catherine Dean (Congregational Life) Marianne Edwards (Personnel) Class of 2022 ~ Lee Gillis (Property) Nancy Miller (Clerk of Session) Doris Moody (Worship) Anne Smart (Christian Education)

Operations: The church office is now open  
Monday - Friday, 9:00 a.m. - 1:00 p.m.



# MISSION AND MINISTRY



## Food Pantry



We have had a steady number of visitors on Tuesdays as Food Pantry distribution has moved inside the building again. Instead of using the parlor as the gathering place, which we had done for years before starting drive-through service, we are having folks park in the back and enter the nursery door where they have become accustomed to see me. This also reduces the amount of walking for those who find that difficult. New faces continue to join the ranks and we have served 7 new families in addition to 19 returning ones in December.

As I have in the past couple of years, I have distributed calendars which had come to me unsolicited and, this year, some of those that came to you, as well. Our visitors have been eager to choose one or two apiece, and there are many yet to be taken. Keep this in mind next Fall when you start to receive these items. My first ones came in July!

During December, because we have had some very generous cash donations in the past few months, it was determined that each bag would be accompanied by a Christmas card containing a cash gift for them to use as they needed. Because recipients were only handed the envelopes and not told there was cash enclosed, we have not had any feedback on this yet, but some of those folks will return in January with, no doubt, many thanks expressed to you. I thank you, as always, for your generosity.

In addition, thank you for in-kind donations made throughout the month, but particularly for the 133 items brought to the Christmas Eve service. This was a nice addition to the pantry and added a bit of variety to the bags to be distributed on the following Tuesdays. Please continue to include the basic items we distribute when making your grocery shopping lists; the need continues. -Donna Gautier

## Samaritan Ministry

Opening the building has increased the number of people coming in seeking help. We thank those who have helped through generous donations to help continue this ministry. This month, we helped four people for a total of \$474.58. There is a need for another person to help Bill as he aids those who come to us for assistance. Please consider giving of your time once a month for this ministry.



## TREASURER'S CORNER

January is traditionally a new beginning. We have just celebrated Christmas with the wonder of the miraculous birth.

I thank you for your faithfulness in 2021. We have much for which to be thankful and much work to do in 2022. Almost everything we need to do will take money. Please look into your hearts and take stock of your blessings. May God be with you.

Joel D. Burns

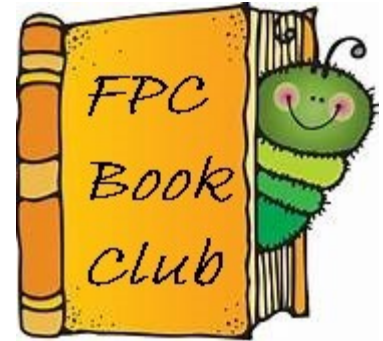
|                   | October   | November | 2021 YTD  |
|-------------------|-----------|----------|-----------|
| Contributions     | \$10,048  | \$23,035 | \$156,590 |
| Other Income      | \$683     | \$683    | \$10,129  |
| Total Income      | \$10,731  | \$23,718 | \$166,719 |
| Budgeted Expenses | \$16,647  | \$12,868 | \$168,697 |
| Net (Loss)        | (\$5,916) | \$10,850 | (\$1,978) |



# CHRISTIAN EDUCATION



The January meeting of the First Presbyterian Book Club will be on the second Thursday, January 13th at 2:00PM. We will be discussing the two time Pulitzer Prize winning author David McCullough's book, *The Great Bridge: The Epic Story of the Building of the Brooklyn Bridge*. This is a saga (and I do mean saga!) of an engineering miracle undertaken shortly after the Civil War, around 1870. It is also a narrative of the social climate of the time as well as a tale of heroes and rascals who had a hand in either constructing or exploiting the enterprise. (Has the word saga been mentioned?)



We have several new members that have joined our group recently, and you would be welcomed as well. We are a group of people that enjoy reading thought provoking books and meeting together to have a meaningful discussion as a group. Looking forward to seeing you on the thirteenth, and please bring your suggestions for future reads to the meeting. -Millie Murphy

## WEDNESDAY EVENING BIBLE/BOOK STUDY

Our group is continuing to meet **IN PERSON** (with social distancing) beginning at 6:30 P.M. Wednesday nights to study *The Gospel According to Paul: The Creative Genius who Brought Jesus to the World* by Robin Griffith-Jones. This is a dynamic portrait of Paul the man, his message and his world. It shows how he used his relentless energy to spread the gospel to almost all the Greek speaking provinces of the Roman empire.

Joel D. Burns



## SUNDAY SCHOOL



We are meeting **IN PERSON** and via **ZOOM** at **9:30 AM** to study the second part of Walter Brueggemann's series on Exodus, *Delivered into Covenant*. *Delivered into Covenant* offers a guide to the second half of Exodus—from Israel's journey through the wilderness to Mount Sinai to the establishment of the tabernacle—drawing out "pivotal moments" in the text. Throughout, Brueggemann shows how Exodus consistently reveals a God who is in radical solidarity with the powerless and who is dedicated to cultivating a covenant people who act to repudiate the powers of empire. Questions for reflection and discussion are included at the end of each of the fourteen chapters, making it ideal for individual or group study.

If you wish to join by ZOOM, call me at (478) 414-6516 and I will forward the link.  
Joel D. Burns



# Prayer Requests



### **Church Family:**

Beth Baarda, rehabilitating at a family home  
 Sandra Balfour, stage 4 pancreatic cancer, in hospice care  
 Harry Beck, immunotherapy; Clear of Cancer  
 Nan Carpenter, recovering from fall at home  
 Dr. Joe Edwards, ongoing health concerns  
 Peter Piro, bone cancer recurrence

### **Limited Mobility**

Martha Chappell  
 Helen Danuser

### **Extended Family:**

Judy K. Bledsoe, Mary Lucik's daughter, possible surgery  
 Michael Bledsoe, Mary Lucik's grandson, multiple health concerns  
 Brittany Caruthers, Sunda Coleman's niece, brain tumor  
 Susan Eilers, Mary Lucik's friend, cancer surgery  
 Dee Hartmann, Sandra Balfour's sister-in-law, health issues  
 Alonzo Kelly, Craig Callender's father, Stage 4 Melanoma  
 Elizabeth Knobel, Carolyn Morgan's daughter, cancer stable  
 Julie Montemayor, Becky Henderson's mother, ongoing health concerns  
 Paula Mitchell Murray, Anne Smart's sister, Stage 4 Melanoma  
 Jeremy Murray, Sunda Coleman's great nephew, surgery on his foot  
 Chris Pearson, Sunda Coleman's son, recovering at home; dialysis  
 Runette Pounds, Sunda Colman's mother, ongoing health concerns  
 Willy Sanders, Sunda Coleman's cousin, ongoing health concerns  
 Bob Smart, Anne Smart's husband, ankylosing spondylitis  
 Windy Spaide, Craig Callender's sister, ongoing health concerns  
 Randy Stewart, Haywood Edwards son-in-law, ongoing health concerns



### **In Assisted Living:**

Bryan Dempster, Green Acres, 313 Allen Memorial Drive, Milledgeville 31061  
 Nancy Holbrook, The Dublin Place, 504 Fire Tower Rd, Dublin GA 31021  
 Eloise Lamb, Fellowship Home at Meriwether, 10 Meriwether Place Milledgeville 31061  
 Gloria Smith, Highland Hills Village, 1660 Jennings Mill Road Watkinsville, GA 30677  
 Suzy Smith, Savannah Court, 1061 Willow Run Rd, Unit 4, Greensboro GA 30642

## Anniversaries

January 29~ Dudley & Anne Weathers



## Birthdays

January 1~ Nan Rogers

January 2~ Haywood Edwards

January 3~ Elizabeth Wells

January 7~ GraceAnne Azahar

January 9~ Nancy Holbrook

January 11~ Harry Beck

January 21~ Frida Ituka

January 24~ Ruby Werts

January 31~ Rosemary Begemann

